

PLANT VS ANIMAL CELLS

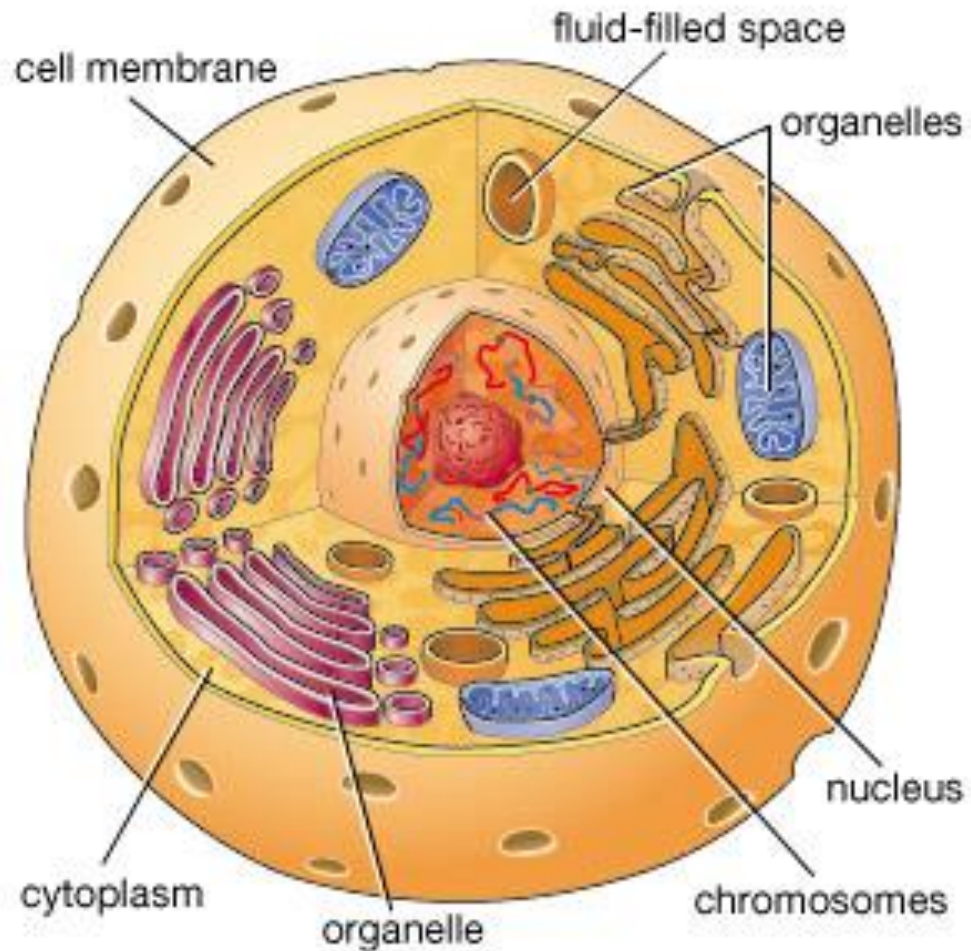
Cells

- The cell is the **building block of all living organisms.**
- It is the **smallest unit of life**
- We are made of about 10,000 billion cells.

Cells

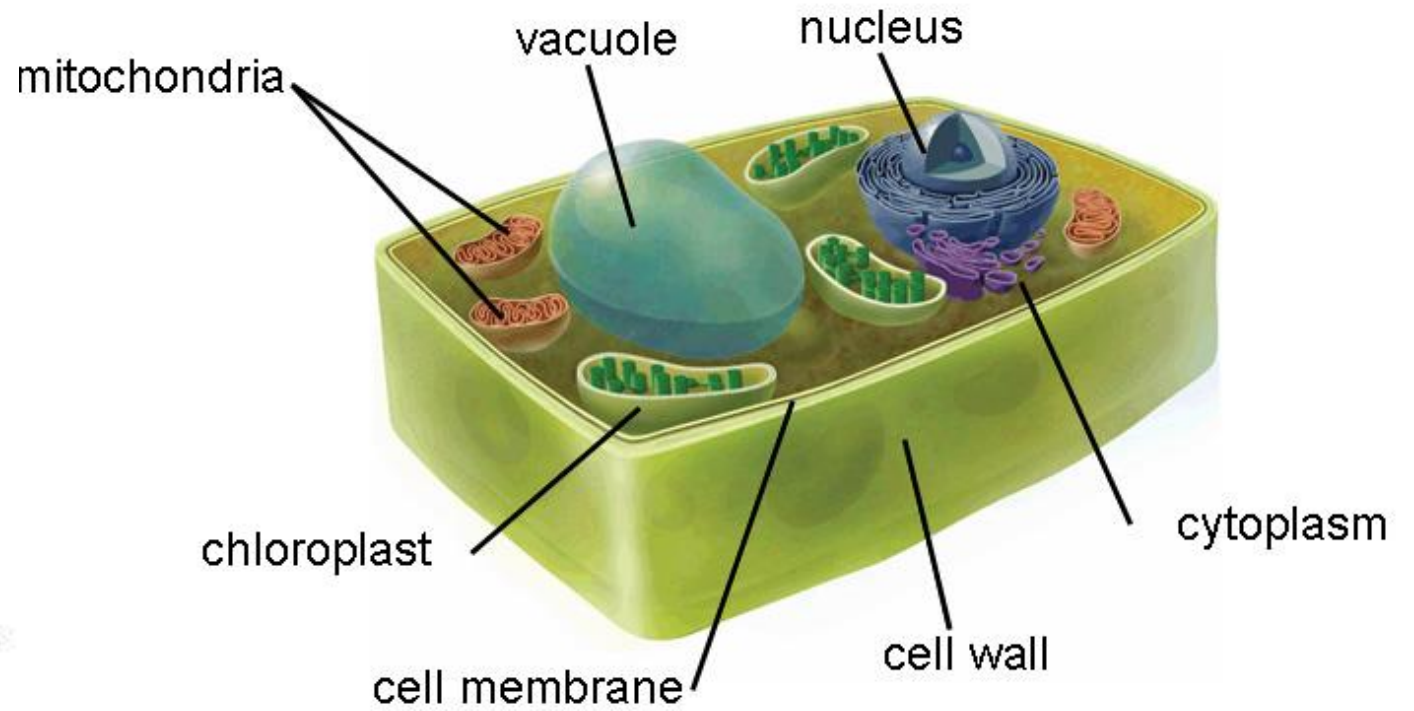
- At the beginning all cells within an organism are the same, but as they develop they become specialized.
- Within humans, there are many different types of cells that vary in function

Animal Cell

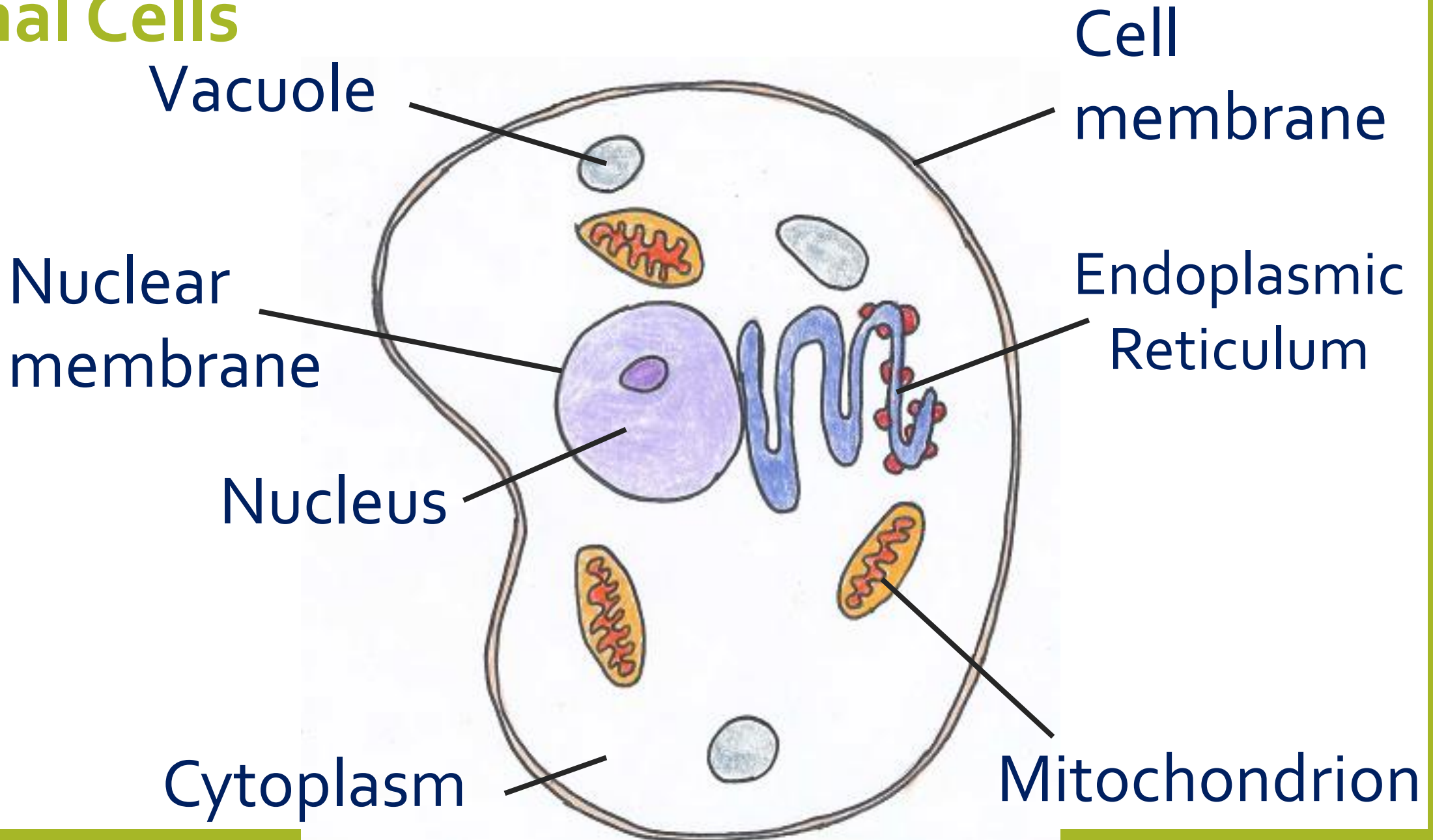


© 2006 Encyclopædia Britannica, Inc.

Plant Cell



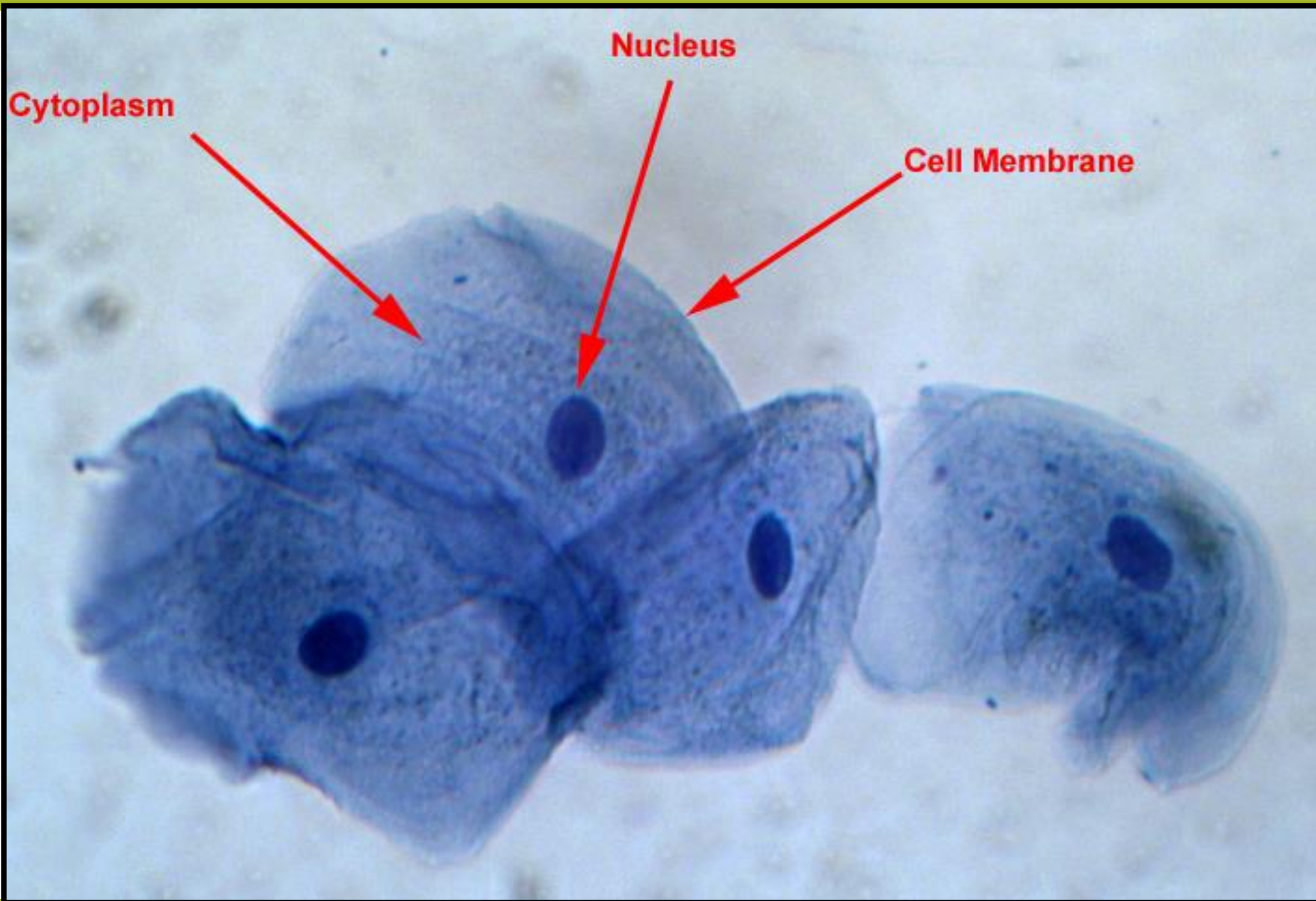
Animal Cells

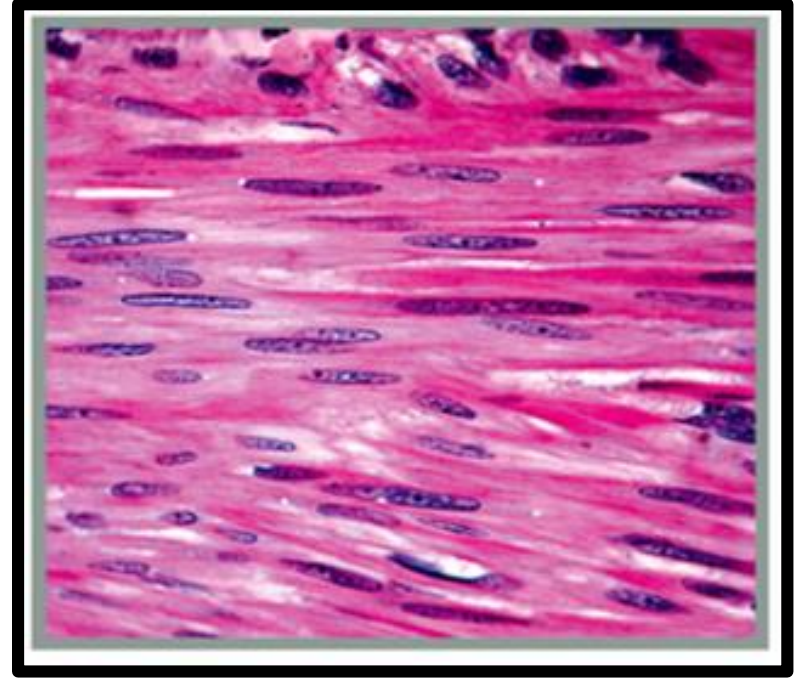


Cytoplasm

Nucleus

Cell Membrane





Animal cells: No regular shape
No cell wall

Plant Cells

Cell membrane

Cell wall

Chloroplast

Nucleus

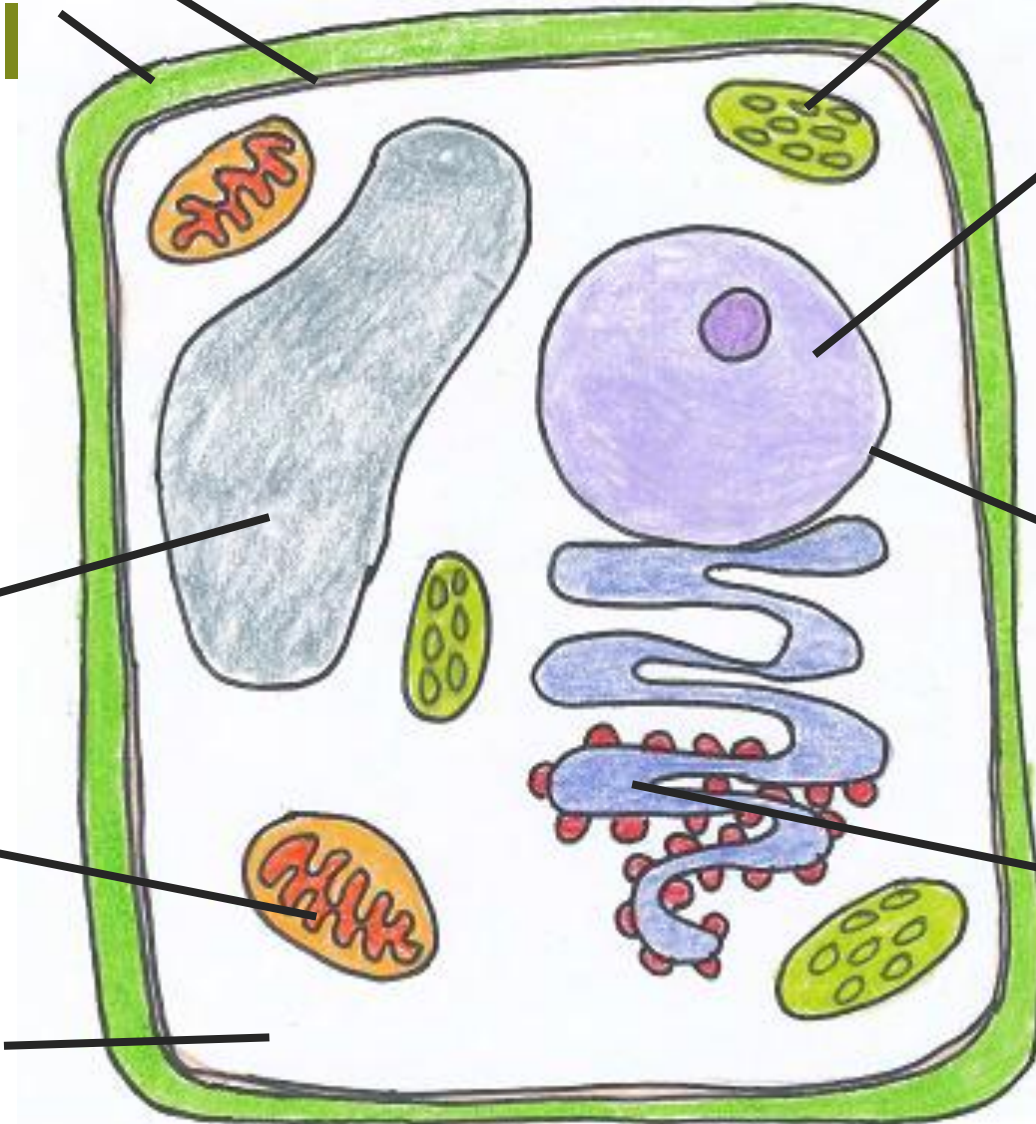
Nuclear membrane

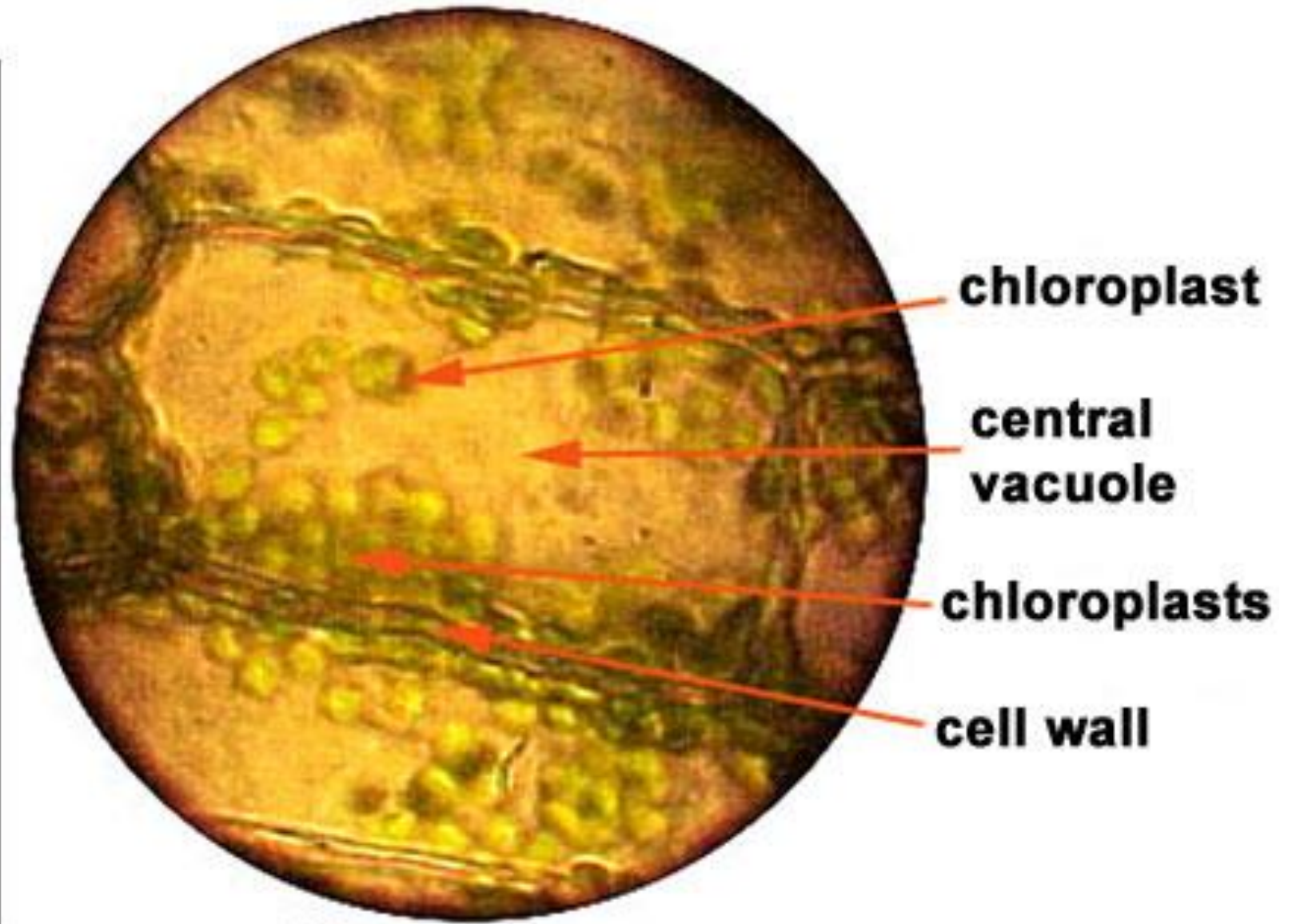
Endoplasmic Reticulum

Vacuole

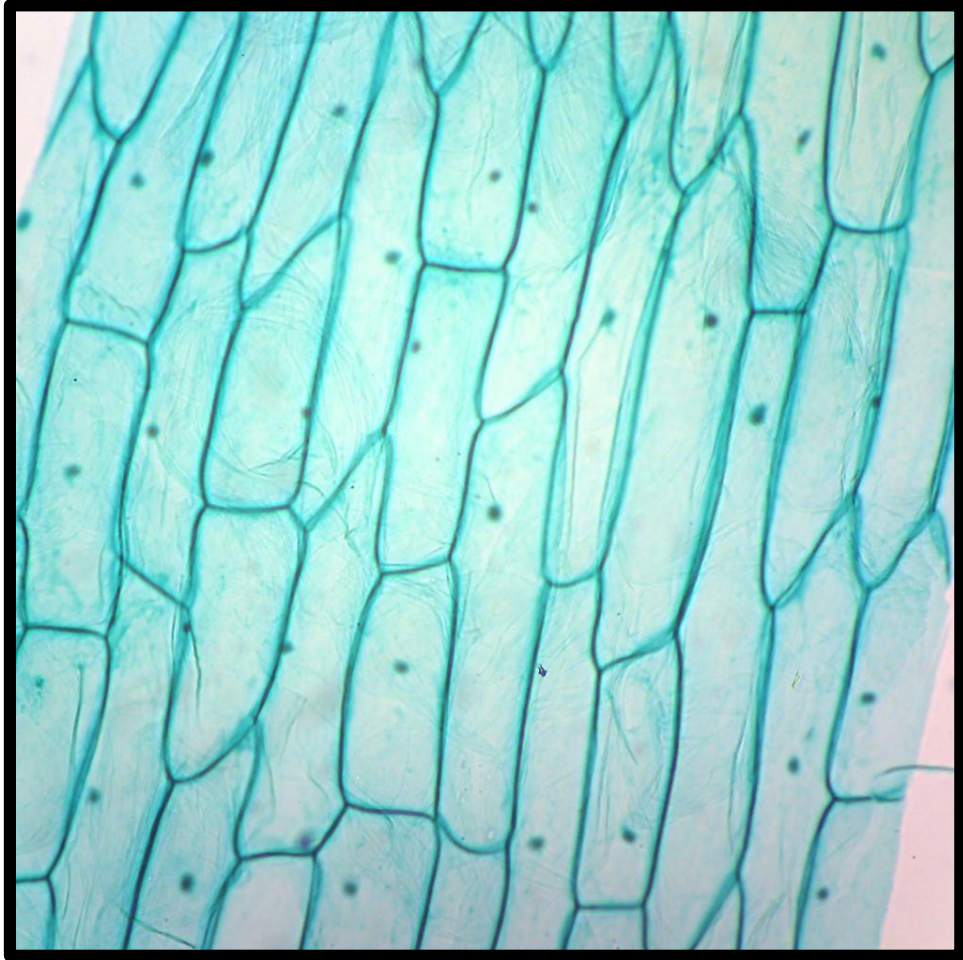
Mitochondrion

Cytoplasm

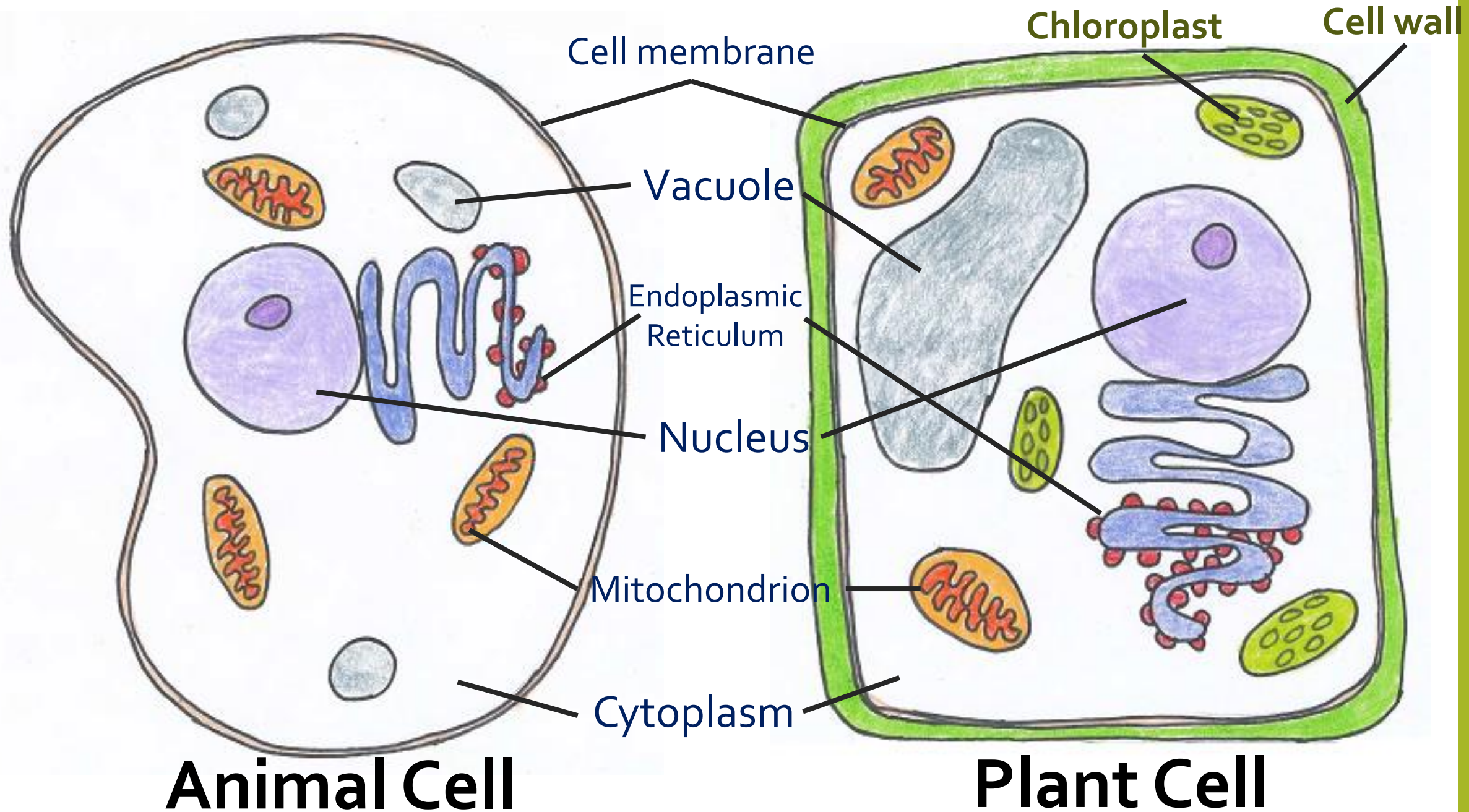




© W.P. Armstrong 2001



Plant cells:
Very
geometric
shape
Looks like a
brick wall



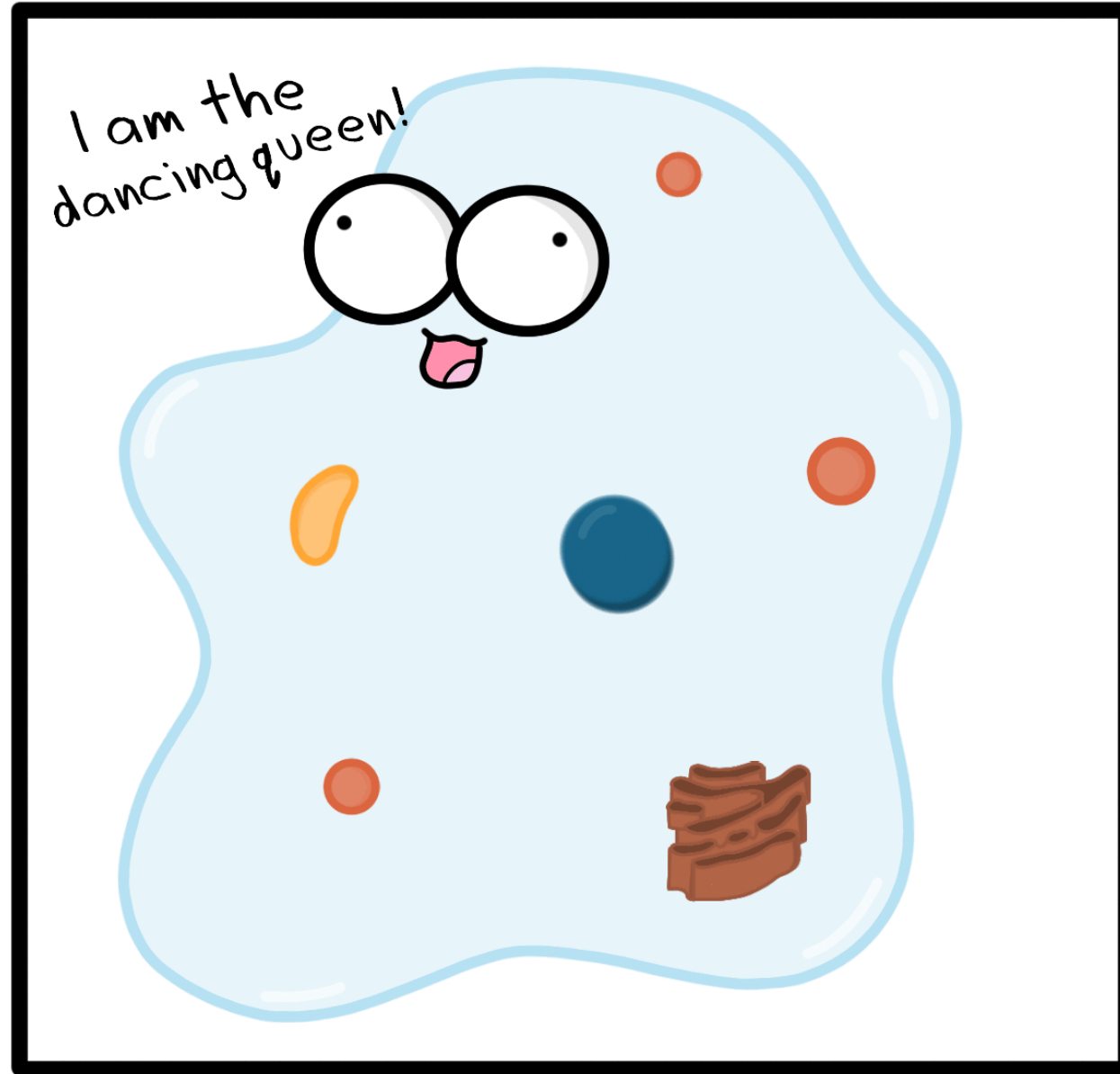


- Structures (organelles) inside the cell:
- **Cell Membrane:**
 - flexible barrier which protects the cell, and controls what can enter and exit the cell.
- **Cytoplasm:**
 - fluid inside the cell membrane which allows substances to move inside the cell

Amoeba Sisters

Cytoplasm

#AmoebaGIFs

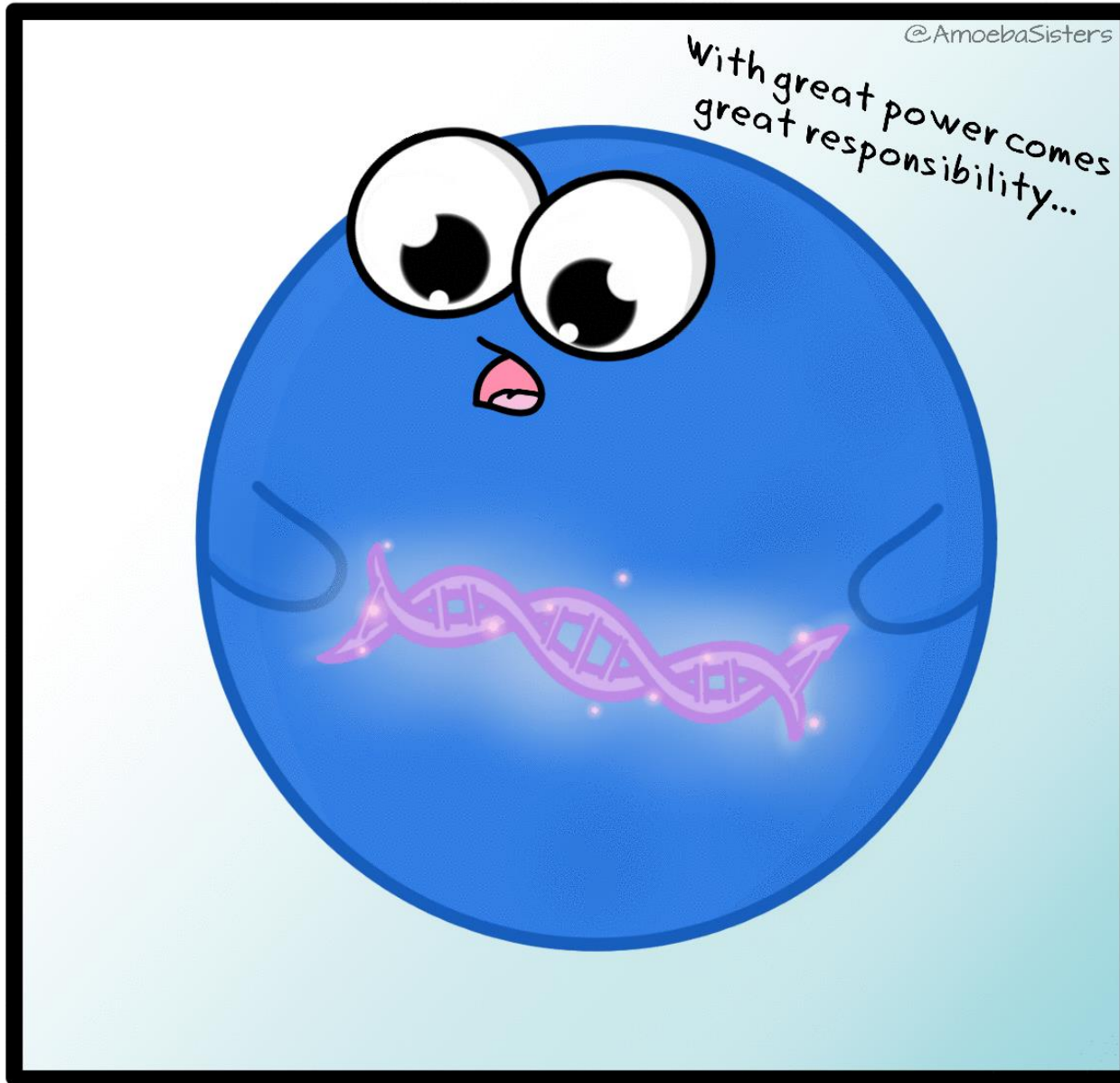


Thick jelly-like substance of the cell

- **Nucleus:**

- **Controls cell's activities** (growth and reproduction) and contains **DNA**

Nucleus



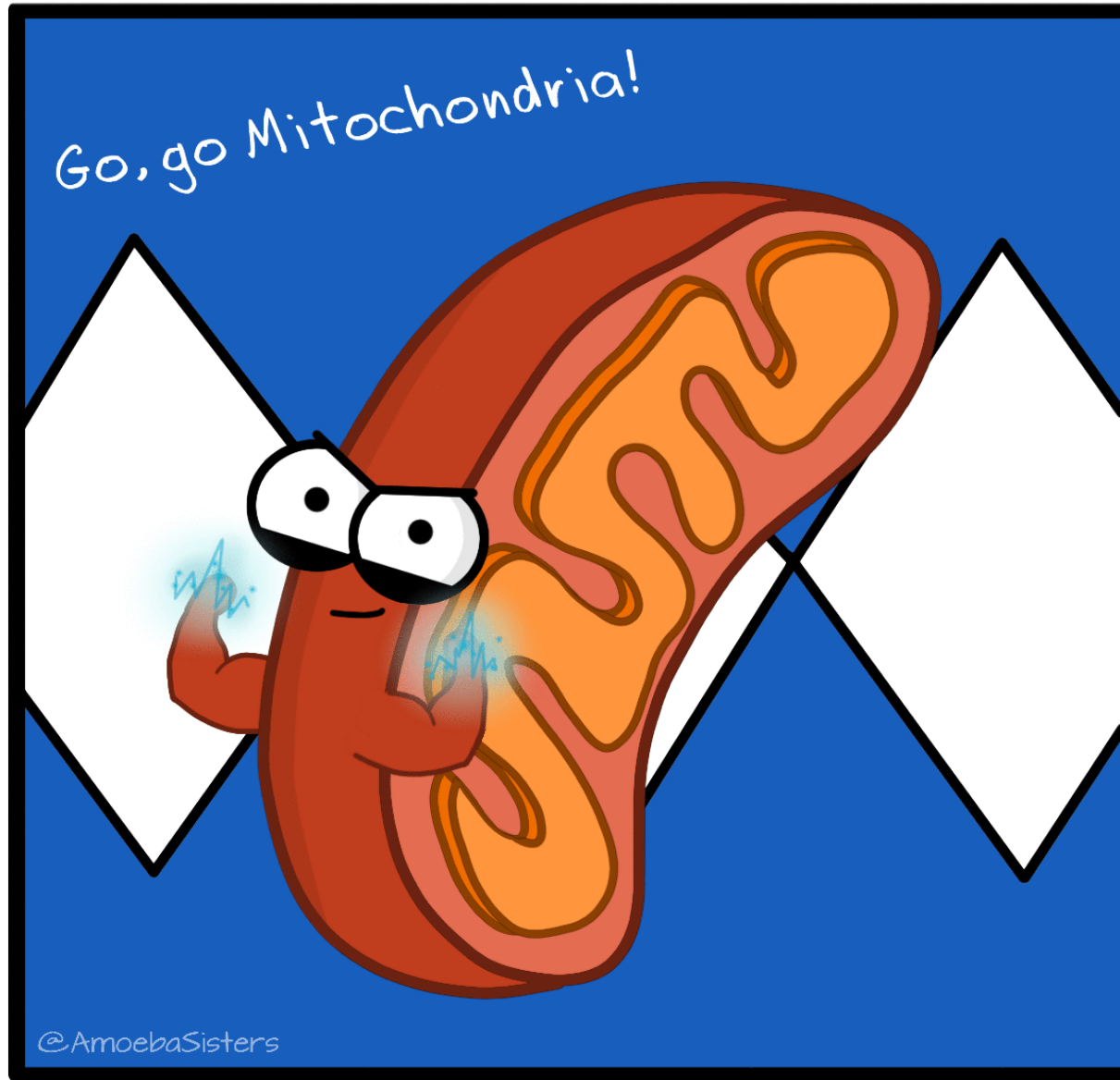
Genetic information bearer of the cell

- **Nuclear Membrane:**
 - **protects the nucleus** and controls **exchanges** between nucleus and the rest of the cell

- **Mitochondria**

- Where cellular respiration happens →
produce energy

Mitochondrion



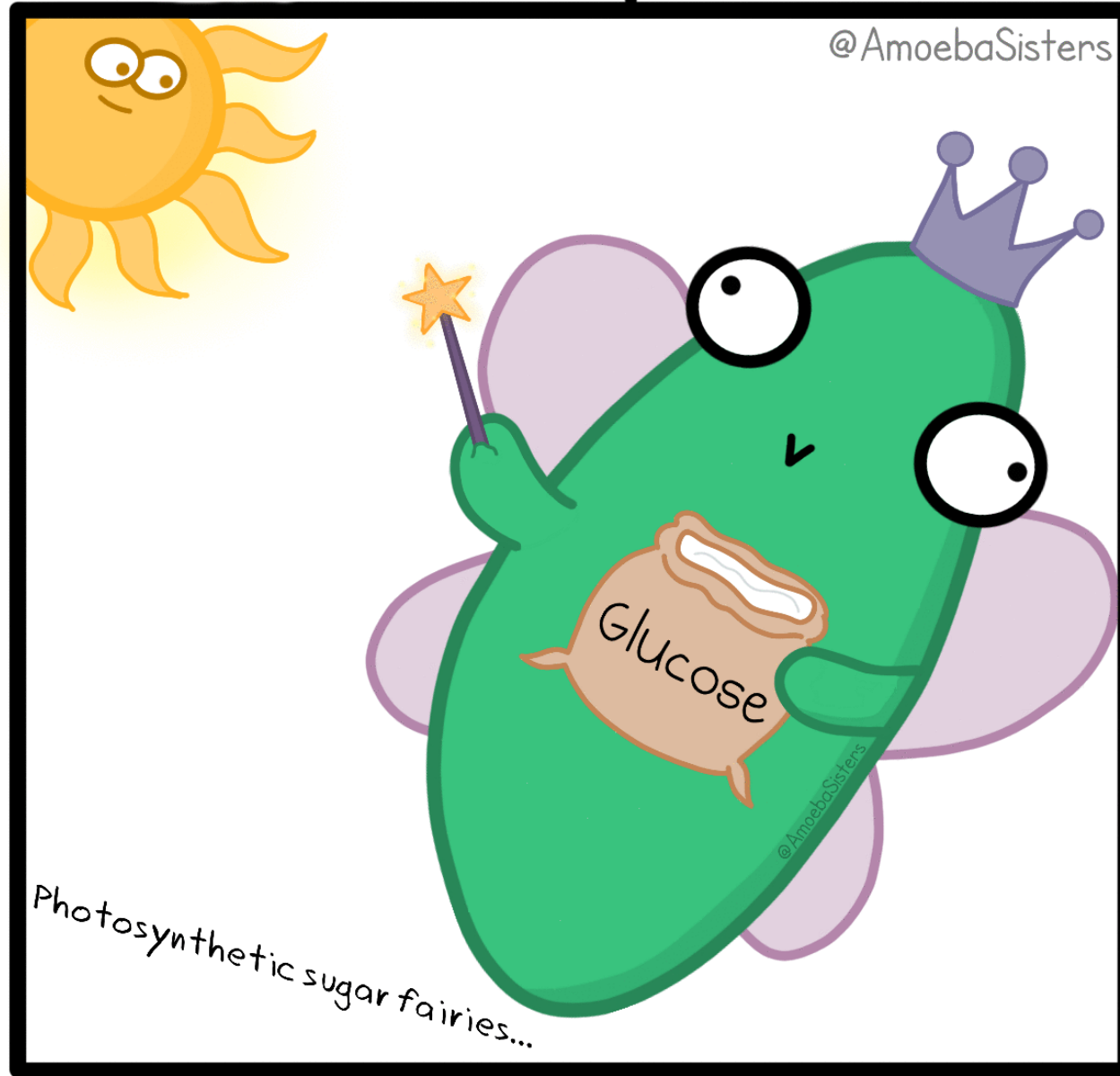
©AmoebaSisters

Mighty energy producer of the cell

- **Chloroplasts**

- Where photosynthesis happens (only in plants)

Chloroplast



Photosynthetic sugar fairies...

Glucose synthesizers of the cell

•Cell Wall:

- Provides structure and support (only in plants)

