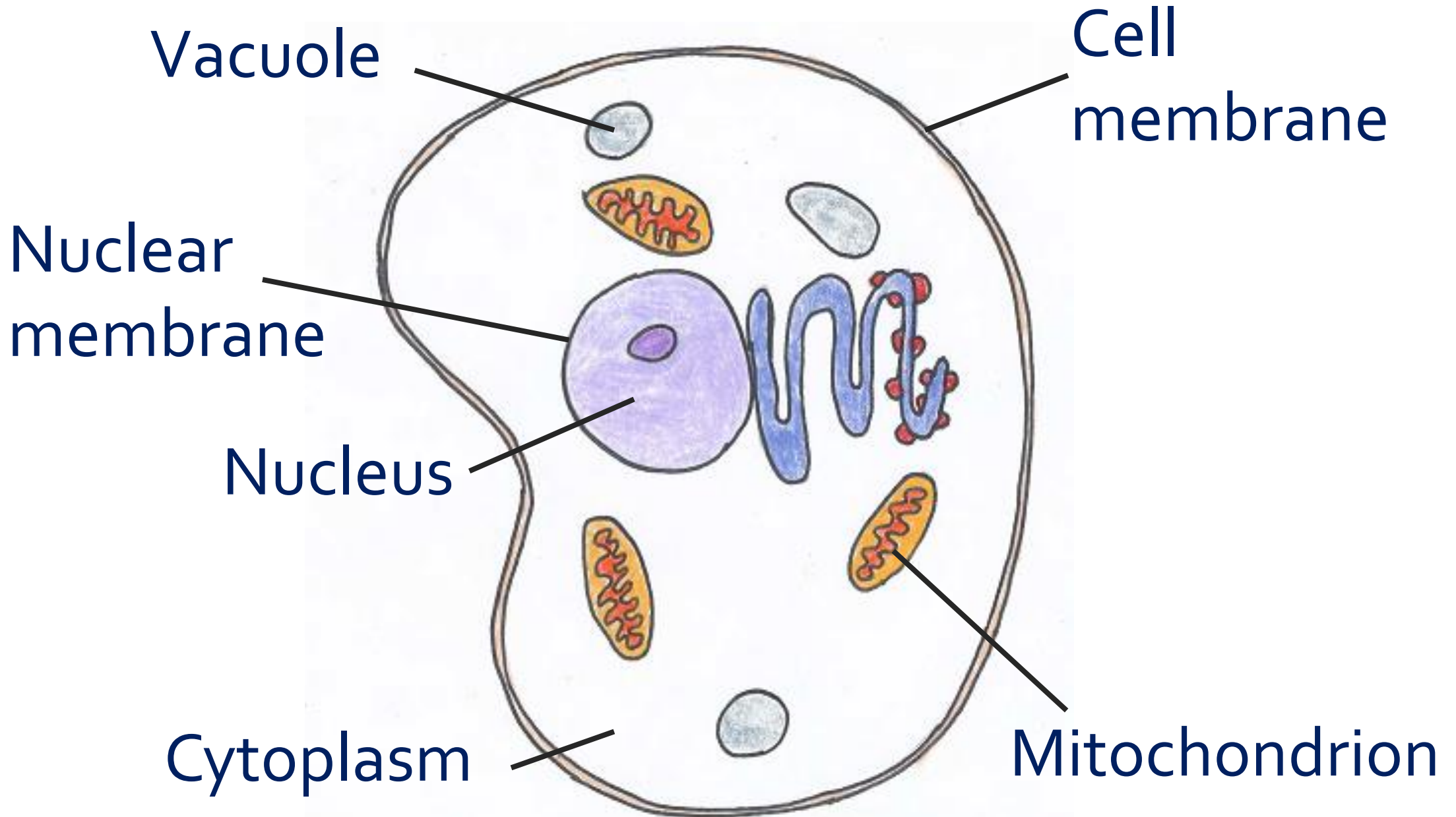
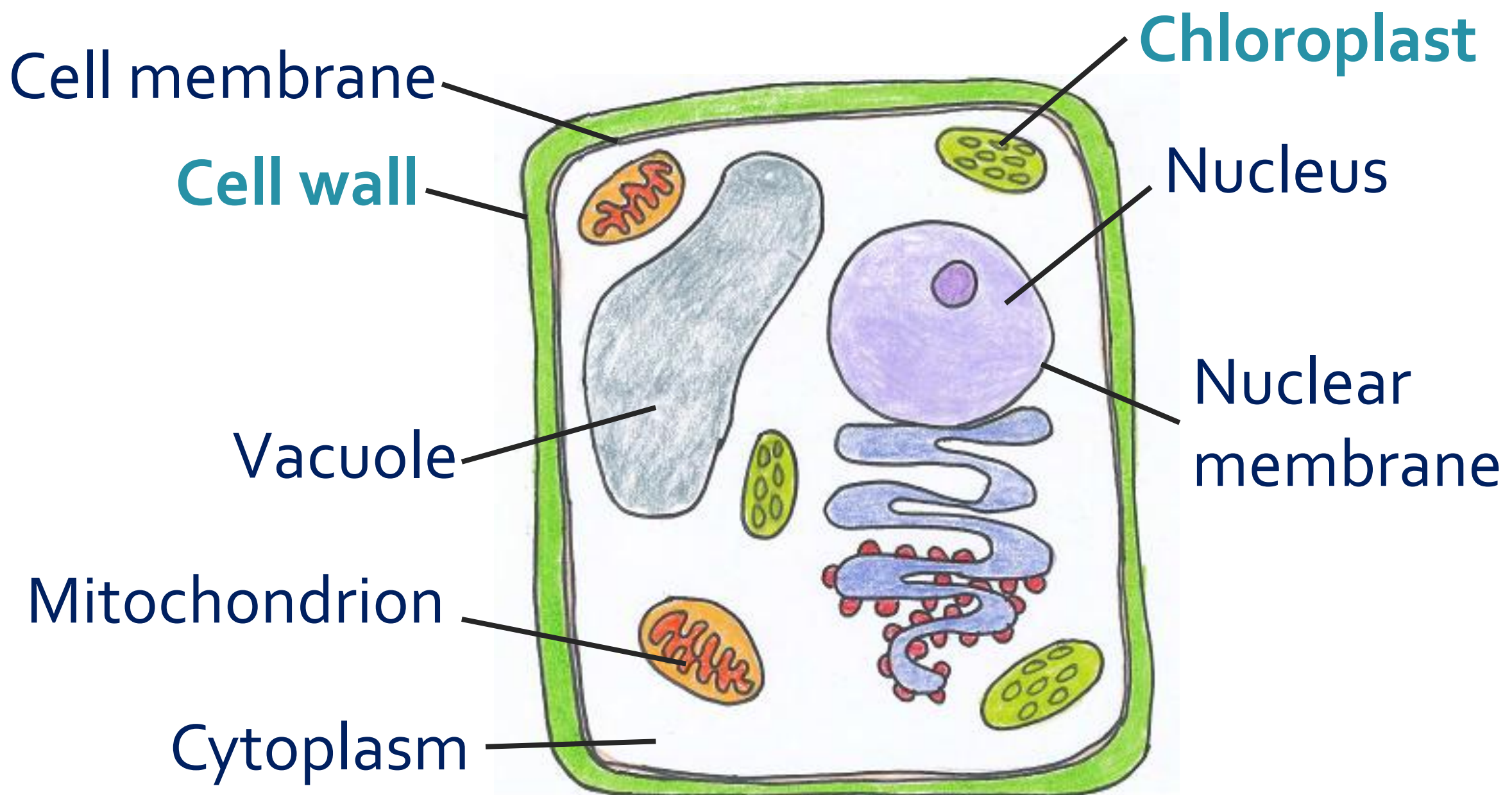


## 4.3 Cellular Components Visible Under a Microscope

What type of cell is this? **Animal cell!**



What type of cell is this? **Plant cell!**



What type of cell is this? **Plant cell!**

Cell wall →  
Cell membrane →  
Chloroplast →  
Vacuole →

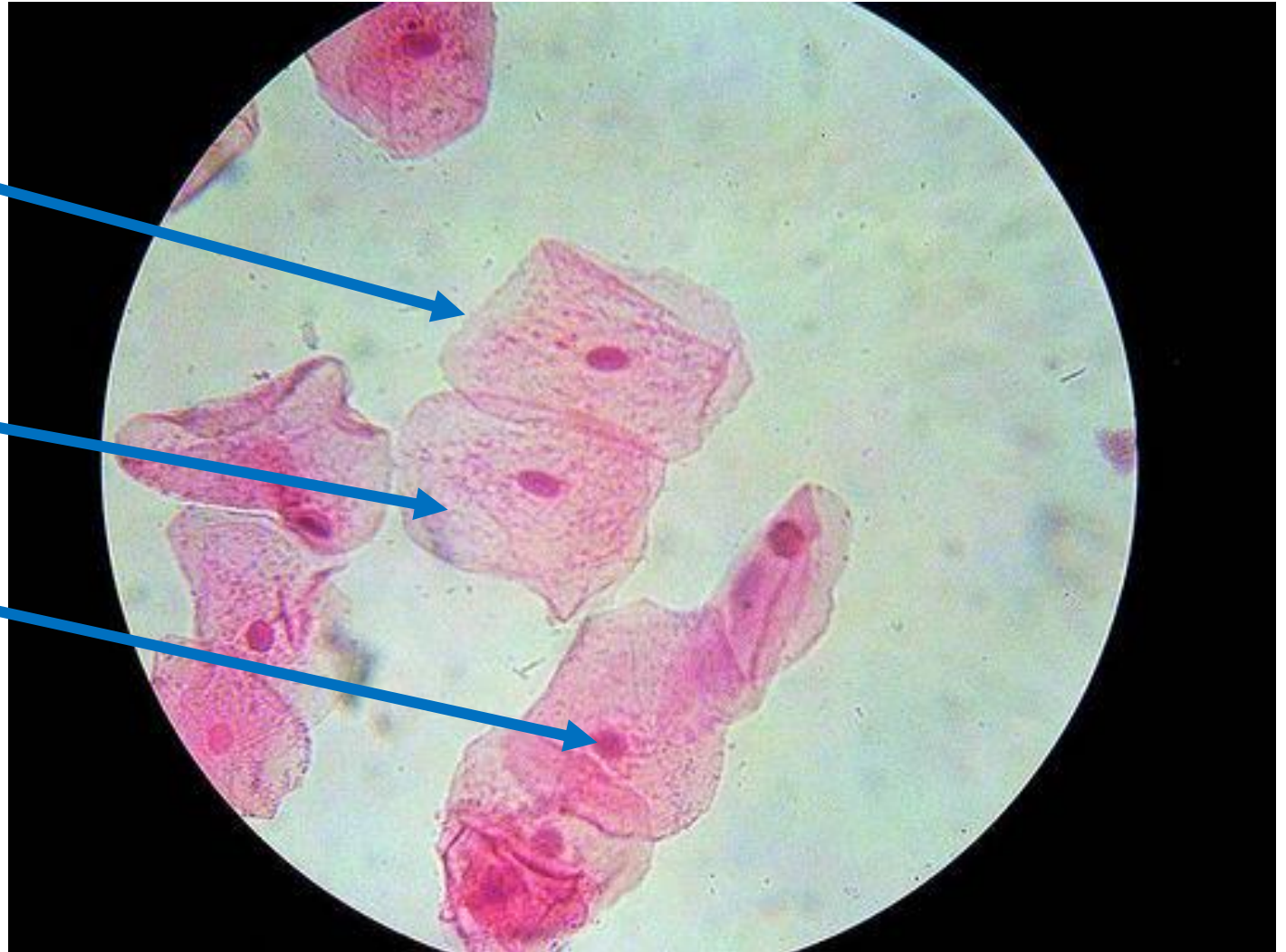


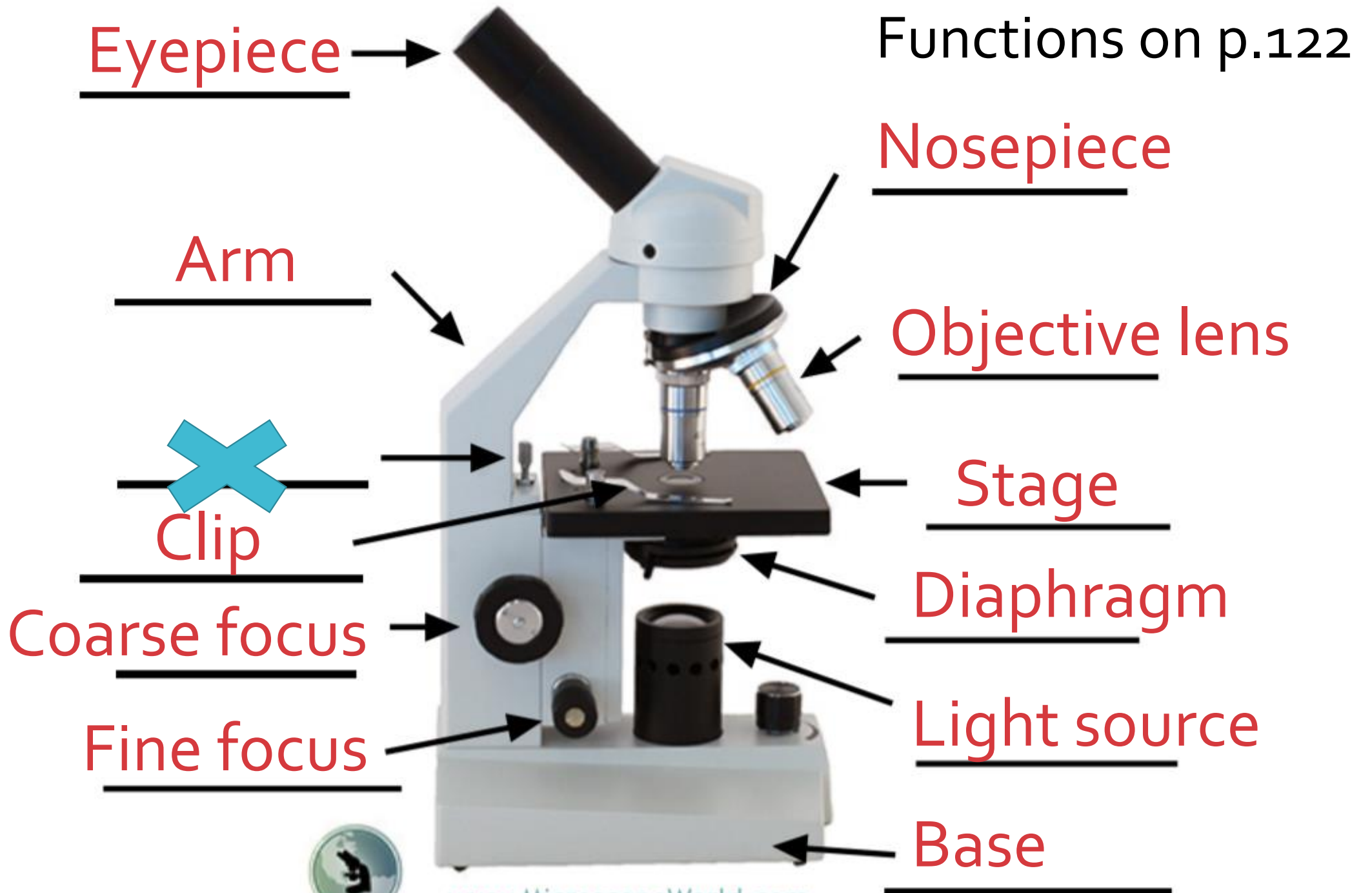
What type of cell is this? **Animal cell!**

Cell membrane

Cytoplasm

Nucleus





Functions on p.122

